



Recorder News



Issue 48

Transferware news from Reynardine Publishing

July 2024

Welcome

A bumper issue this time, in more ways than one. We have struggled to fit everything in so have expanded to three pages (50% extra free!), and we have several notable items including a rare bottle, covered soap dish, covered jar, two new series of British views, two unusual marks, another fish platter, and more on the elusive John Mayer of Fenton. And to top it all another auction sale for the Spode Greek series. We now have to start again for issue 49, so if you have any interesting tit-bits you would be prepared to share, please get in touch. Unusual pieces, patterns, or marks, anything of interest would be very welcome. As usual, any contributions or comments should be sent to the normal Recorder email address please:

recorder@transferprintedpottery.com

Join the Mailing List

If you would like to be added to the circulation list for this *Recorder News*, for which there is no charge, just send your details, including email address to:

recorder@transferprintedpottery.com

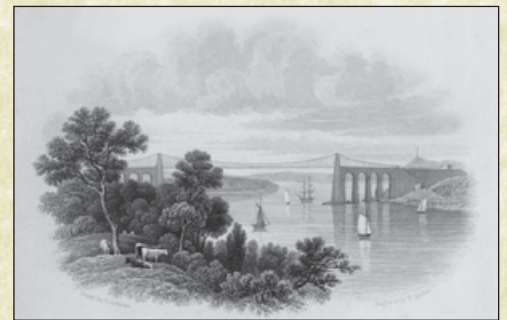
Can we just remind existing subscribers to keep us updated with any email address changes. Each issue that goes out produces one or two errors with invalid addresses. Don't miss out, keep us updated.

Two New Series of British Views

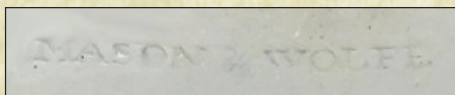
Dick Henrywood has recently reported two previously unrecorded series of British views. One, now dubbed the Framed British Views series, appears in the darker blue favoured by the American market. It is represented here by a jug printed with a view identified as Kirkstall Abbey. There are just three known scenes on jugs and a mug, all from identified source prints. The series is covered in the latest bulletin of The Transferware Collectors' Club. The second series, now called the Running Ivy Border series, consists of six titled views, all printed on jugs in black or blackish-blue. The jug shown here has a titled view of "The Menai Bridge". The series is covered in the latest bulletin of the Friends of



Blue where just two of the source prints are shown. We are grateful to John Whiteside for pointing out that this view of the Menai Bridge is copied from the title page of Gastineau's *Wales Illustrated* (below).



Mark Time 1



Chinoiserie patterns in general and the Willow pattern in particular have not featured much in this *Recorder News* but here we have a rare mark. The supper set segment printed with the standard Willow pattern is very clearly marked "MASON & WOLFE" (this dish and mark shown courtesy of Norman Muddeman but another is known). It would appear to have originated from the partnership of Miles Mason and George Wolfe (much younger brother of Thomas Wolfe) in Stoke. Their partnership lasted only from 1798 to 1800, so this is clearly a very early example of the standard Willow pattern. Can anyone produce any other wares with this rare mark?

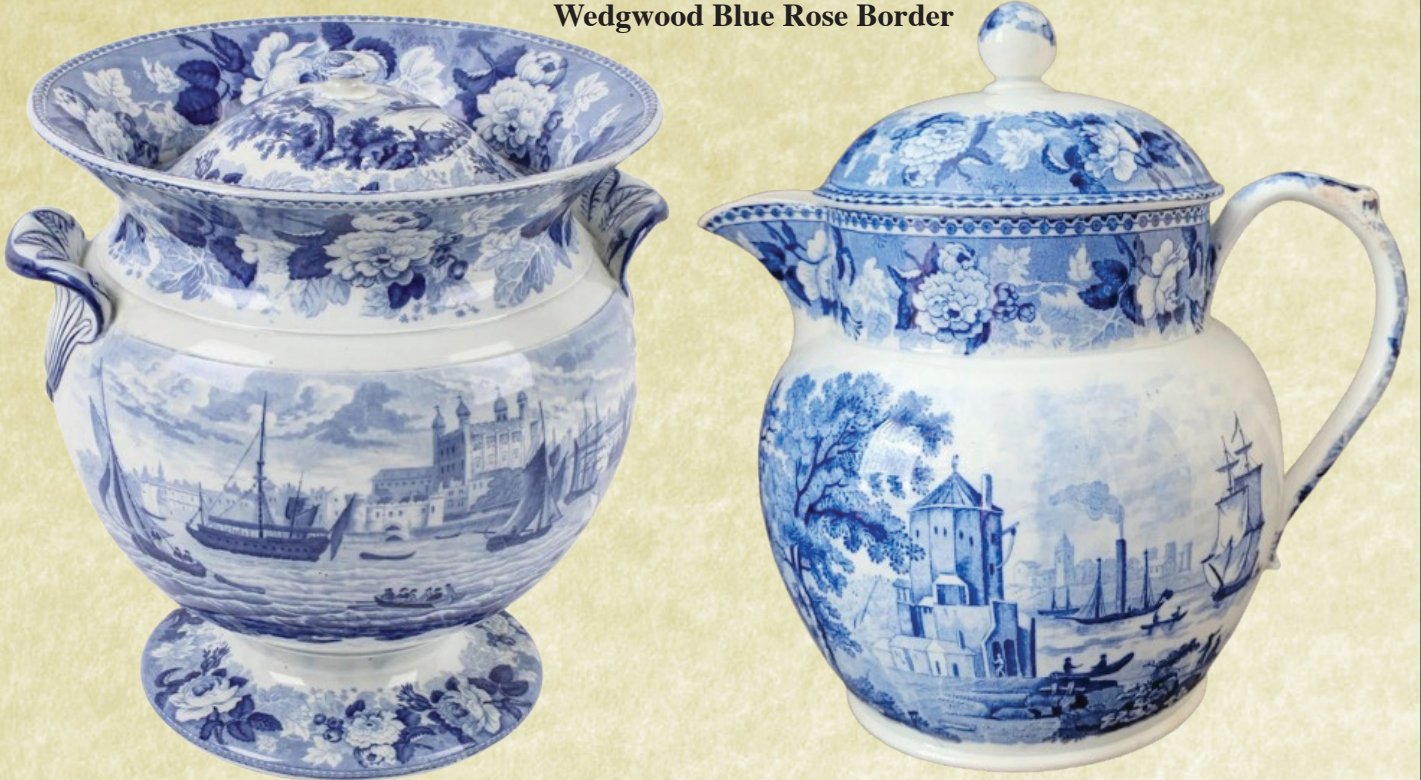
Auction Watch



Back in *Recorder News* 43 we reported on high-value sales of a comport and footbath from Spode's Greek series so our curiosity was piqued when this red-printed soup tureen turned up at Woolley & Wallis in Salisbury at the end of April. It is not possible to say what effect being incorrectly catalogued as Herculaneum might have had, but it eventually sold for a premium inclusive total of just over £720. A great sale for the auctioneers who can be contacted through their website:

www.woolleyandwallis.co.uk

Wedgwood Blue Rose Border



Every so often we unearth a really unusual piece, and here's a rather fine Wedgwood jar and cover printed with a view of the Tower of London in the firm's Blue Rose Border series. The view is known on footbaths and the soup tureen, but this jar would be a fine centrepiece for any collection of British Views. The scene on the cover was illustrated in TR5 as Continental Scene F, found on a variety of

plates and a deep bowl. The jar was sold by Fellows in Birmingham as part of a mixed lot of ceramics. A strange coincidence produced another good covered Wedgwood Blue Rose Border piece, a toast water jug with strainer spout (shown here courtesy of the ever helpful Robert Hawker). It is decorated with two different continental views: Continental Scene A shown here and an unrecorded mountainous scene on the reverse.

Although the continental scenes were covered in TR5, we have yet to tackle the various British scenes in the series. We have notes of ten British views which we have managed to identify, but there are at least sixteen others, so there would be a lot of work to do. Has anyone out there got any interesting pieces? Fellows can be contacted through their website:

www.fellows.co.uk

Rare Shape



Dinner wares were a staple product for most potters, so it is nice to break the monotony and report a rare bottle (courtesy David Henderson). It is printed with an ornate large house with a church to one side, flowers, and a border of floral scrolls and trelliswork. The pattern would seem to be largely romantic, rather than a real place, and probably dates from 1830 onwards. Has anyone seen another bottle?

Another fish platter



Our coverage of the Davenport "Scott's Illustrations" fish platter last time has brought forward another fine example, this one by Ralph & James Clews in their version of the Indian Sporting series (shown courtesy of Brian Hawtin). Again the central scene, which is Driving a Bear out of Sugar Canes, is printed twice to fill the space, albeit with a rather untidy join. Otherwise a magnificent piece which would grace any collection. While the Clews copies of the Indian Sporting series do not quite

match the quality of the Spode originals, they must be equally worthy of being collected, as are the two versions titled "Oriental Sport" (singular) or "Oriental Sports" (plural), one by Edward Challinor of Burslem. It would be interesting to know how many of the Spode scenes were copied by the three other potters.



The Transferware Recorder

Six volumes of *The Transferware Recorder* are currently available. The contents of each volume together with downloadable copies of all issues of this *Recorder News* can be found on the website:

www.transferprintedpottery.com

Worldwide shipping is available but please email for a price quote for whatever combination of volumes you require. Other enquiries and potential contributions to this *Recorder News* should also be addressed to:

recorder@transferprintedpottery.com

Volume One

Published October 2013
176 pages. 579 illustrations.
ISBN 978-0-9926581-0-6

Volume Two

Published June 2015
176 pages. 594 illustrations.
ISBN 978-0-9926581-1-3

Volume Three

Published October 2016
184 pages. 596 illustrations.
ISBN 978-0-9926581-2-0

Volume Four

Published March 2018
208 pages. 710 illustrations.
ISBN 978-0-9926581-3-7

Volume Five

Published May 2023
208 pages. 676 illustrations.
ISBN 978-0-9926581-4-4

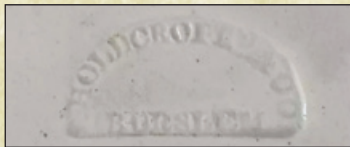
Volume Six

Published May 2023
200 pages. 680 illustrations.
ISBN 978-0-9926581-5-1



Mark Time 2

It is always exciting to find little-known marks and here is a good example on a saucer by Holdcroft & Co. The saucer itself is printed with a late and slightly romanticised country house scene within a floral border, but it was the very clear mark that attracted us. Peter Holdcroft & Co. potted in Burslem and are listed in directories between 1846 and 1851, so a relatively short-lived firm. An unusually scenic pattern for such a late date.



Arabesque Border

The Copeland & Garrett Arabesque Border series was covered in detail in TR6, where the list of views included just one unidentified scene. It was shown in



brown on a small footed bowl or tureen but we are now delighted to reveal its true purpose. The same piece is shown here in blue but complete with a cover and inner strainer (courtesy of Gillian Neale-Sheppard) which shows that it is a soap dish. We are also indebted to the sleuthing skills of Terry Neale-Sheppard who has located the view as the Watergate at York House in London. Terry has also found the



original source, which must be an earlier issue of the print shown here.

Update

Following our previous notes, two more jugs have turned up bearing the initials for John Mayer of Fenton. They are shown here, both with the same sheet pattern but very different colouring. The pink lustre-washed jug is particularly striking (courtesy Sue Witts of Appleby Antiques). One interesting aspect is that the mark includes a pattern number 43, which makes us wonder how many more designs are out there to be discovered.

