



Recorder News



Issue 34

Transferware news from Reynardine Publishing

January 2022

Welcome

A very happy New Year to you all. We hope it proves to be a better year, with lots of transferware treats! Another mixed bag this time, including a new pattern from literature, a couple of new images, some notes on retailers' marks and scale plates, and a small advertising novelty. We hope they are of interest. As usual we would love to hear news, views, or other comments, all to the usual *Recorder* email address please:

recorder@transferprintedpottery.com

Join the Mailing List

If you would like to be added to the circulation list for this *Recorder News*, for which there is no charge, just send your details, including email address to:

recorder@transferprintedpottery.com

Lady of the Lake

In TR4 we identified five different Lady of the Lake patterns but we have now come across a sixth. This brown-printed saucer with ochre rim (shown courtesy of Johan Feyaerts) has a centre scene which is similar to the Carey, Heath and Adams versions but with yet again a different border. The interest lies in the clear printed mark for John Shorthose & Co. It is not titled but would surely be a prime target for Walter Scott collectors.

SHORTHOSE & CO.



Scale Plates



Now for something completely different. Is anyone else interested in scale plates? They are flat pottery slabs, usually circular or rectangular, sometimes with one raised edge, which were integral parts of most scales and weighing machines. Marked examples are found by Wedgwood or Copeland. Many are plain white but often printed with the scale maker's name and other details. Some of the more attractive are also printed overall with a faux-marble pattern. This example has no maker's mark but was made for one major scale maker, Bartlett of Bristol. There were other makers in Bristol and many in London. Our records extend to 24 makers so far but we have barely scratched the surface. Dublin, Birmingham, Brighton, Manchester, Norwich, Glasgow and Reading feature alongside smaller places such as Thatcham and even Auchtermuchty! Contributions welcome.

New Image

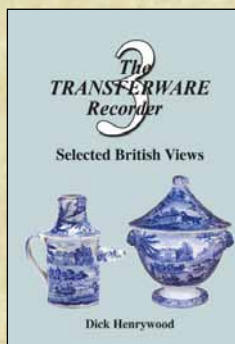
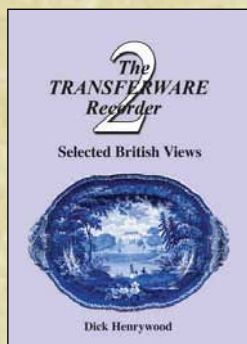
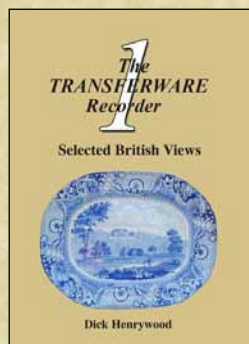
Again in TR4, we managed to illustrate all but two of the Boote Scenes from Dickens series, either on a tile or a teapot stand. Here is one of the missing scenes, this one "Grandfather Hopes to Win Money for Nelly", on a previously unrecorded larger teapot stand 17.5cm. Can anyone produce the other missing image – "Surprise of Mr. Swiveller on Beholding the Marchioness"? Incidentally "Joe's Final Appeal to Dolly" has now been seen on a teapot stand and most scenes must exist on both tiles and stands.



Suit You Sir?



Amongst the many illustrations in the two *Dictionary* volumes is a small advertising Willow pattern plate made in 1879 for Richard Stanway, a tailor of Newcastle-under-Lyme. It transpires that he was not the only tailor to use such a marketing ploy, and here is another, very similar example made for the Manchester Tailoring Depot in Wigan. This one also has an inscription on the reverse: "Gentlemen's and Boy's [*sic*] clothing of a superior character, ready for wear or made to measure". Another example has Bolton in place of Wigan so presumably a local chain of clothiers. As with the Stanway example, they have small holes in the rim, possibly to be attached to garments as a novel label. They are truly fascinating by-gones.



Volume One

Published October 2013
176 pages. 579 illustrations.
ISBN 978-0-9926581-0-6

Volume Two

Published June 2015
176 pages. 594 illustrations.
ISBN 978-0-9926581-1-3

Volume Three

Published October 2016
184 pages. 596 illustrations.
ISBN 978-0-9926581-2-0

Volume Four

Published March 2018
208 pages. 710 illustrations.
ISBN 978-0-9926581-3-7

The Transferware Recorder

All four volumes of *The Transferware Recorder* are currently available. The contents of each volume together with downloadable copies of all issues of this *Recorder News* can be found on the website:

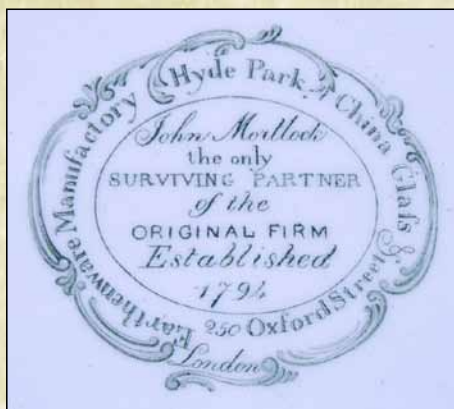
www.transferprintedpottery.com

Worldwide shipping is available but please email for a price quote for whatever combination of volumes you require. Other enquiries and potential contributions to this *Recorder News* should also be addressed to:

recorder@transferprintedpottery.com

Mark Time

Our interest in retailers' marks has been noted before and we have now assembled quite a list of later-19th century china and glass retailers who ordered special souvenir wares for their locality. The list can be found online (see www.reynardine.co.uk, select "Transferware Research", then the Souvenir Retailers article). However, it is the earlier retailers that we find most fascinating and many of their marks are quite uncommon. The example shown here is for John Mortlock, a major London firm, taken from one of the Machin & Potts views of Cheltenham series (see TR1 for a full listing). Other London firms predominate, as may be expected, and we have unearthed a few quite rare examples, but we also have records of marks from other cities (Birmingham, Bristol, Dublin, Norwich) and towns as far north as Dundee, southwards through Dewsbury, Oswestry, Wolverhampton, Leamington Spa and



Leighton Buzzard, right down to Cowes on the Isle of Wight. They can be found on a range of wares, from views to floral patterns. Always turn things over! The subject seems to be ripe for research so any contributions of marks or related information would be very gratefully received.

New Image

We have mentioned before the problem of locating images for *The Transferware Recorder* and we have occasionally included images which are not really good enough (but better than nothing). A good example is the view

of "Kenmount House" on a platter in Ralph Stevenson's Acorn and Oak Leaf Border series (TR1, page 15). We are pleased to be able to show a much better image of a platter sold recently on the Kurau eBay site. We think the buyer should be very pleased!



Dates for your Diary

The worldwide pandemic has led to the cancellation of most physical meetings, several now taking place online. It has also led to a proliferation of online lectures, some at relatively short notice. This Dates feature will be resumed when possible.

"Select Scenery" series

No new items or images we are afraid, but we now know that the view of Killin is correctly titled "Killin, at the Head of Loch Tay" (note "at the") and we have also been able to confirm the title "View in Glengyle". This still leaves the titles "Stirling", "Norwich" and "Nottingham" unconfirmed. Can anyone help with those?

Initials CR & S

Andrew Pye has kindly pointed out that the initials CR & S noted in *Recorder News* 32 probably relate to Chetham, Robinson & Son, who succeeded Chetham & Robinson when Robinson's son joined the partnership in 1834. The CR & S partnership was dissolved in 1841. Thanks Andrew!

Reynardine Publishing, Bow Station, Bow, Crediton, Devon, EX17 6JD, England

email: recorder@transferprintedpottery.com

website: www.transferprintedpottery.com